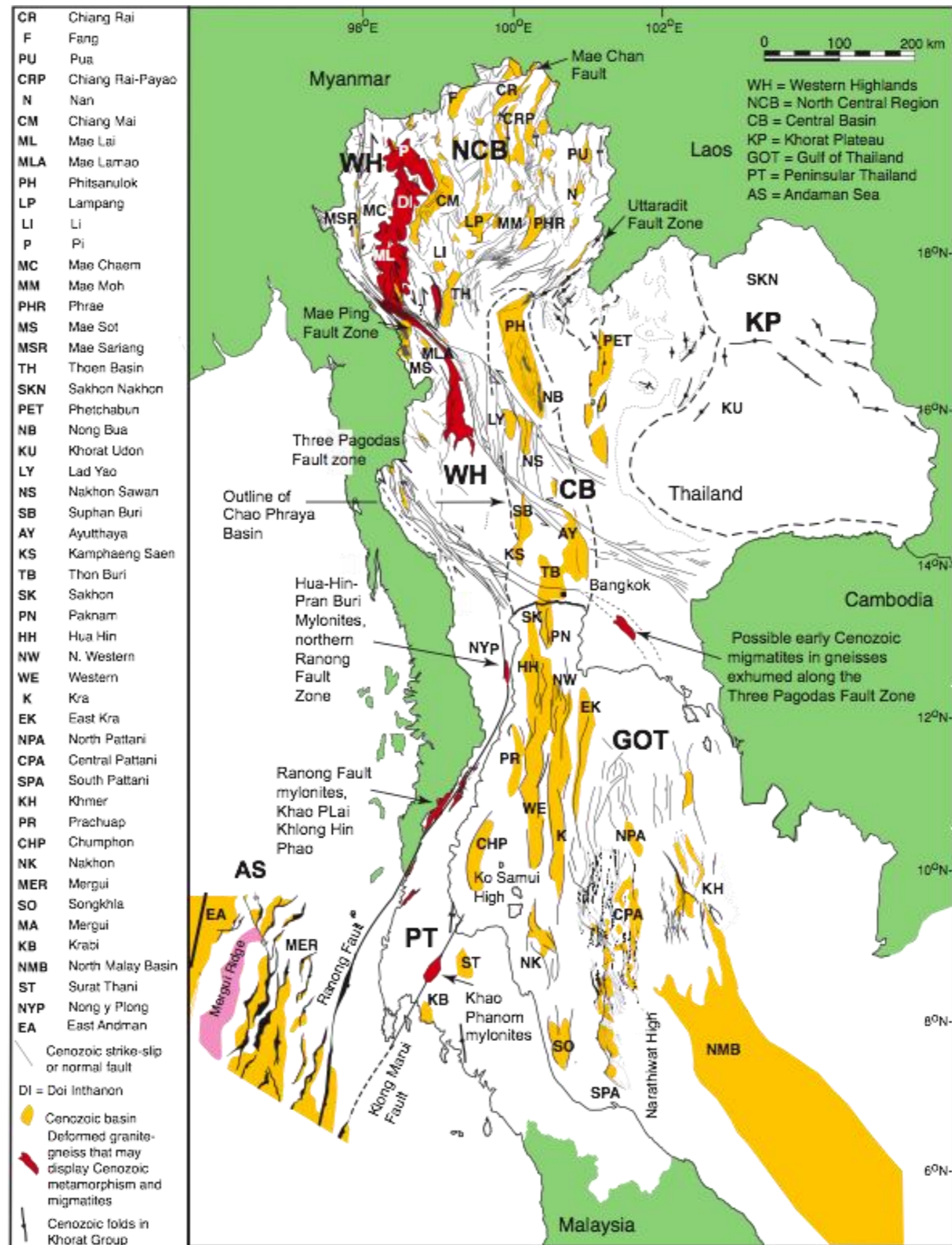


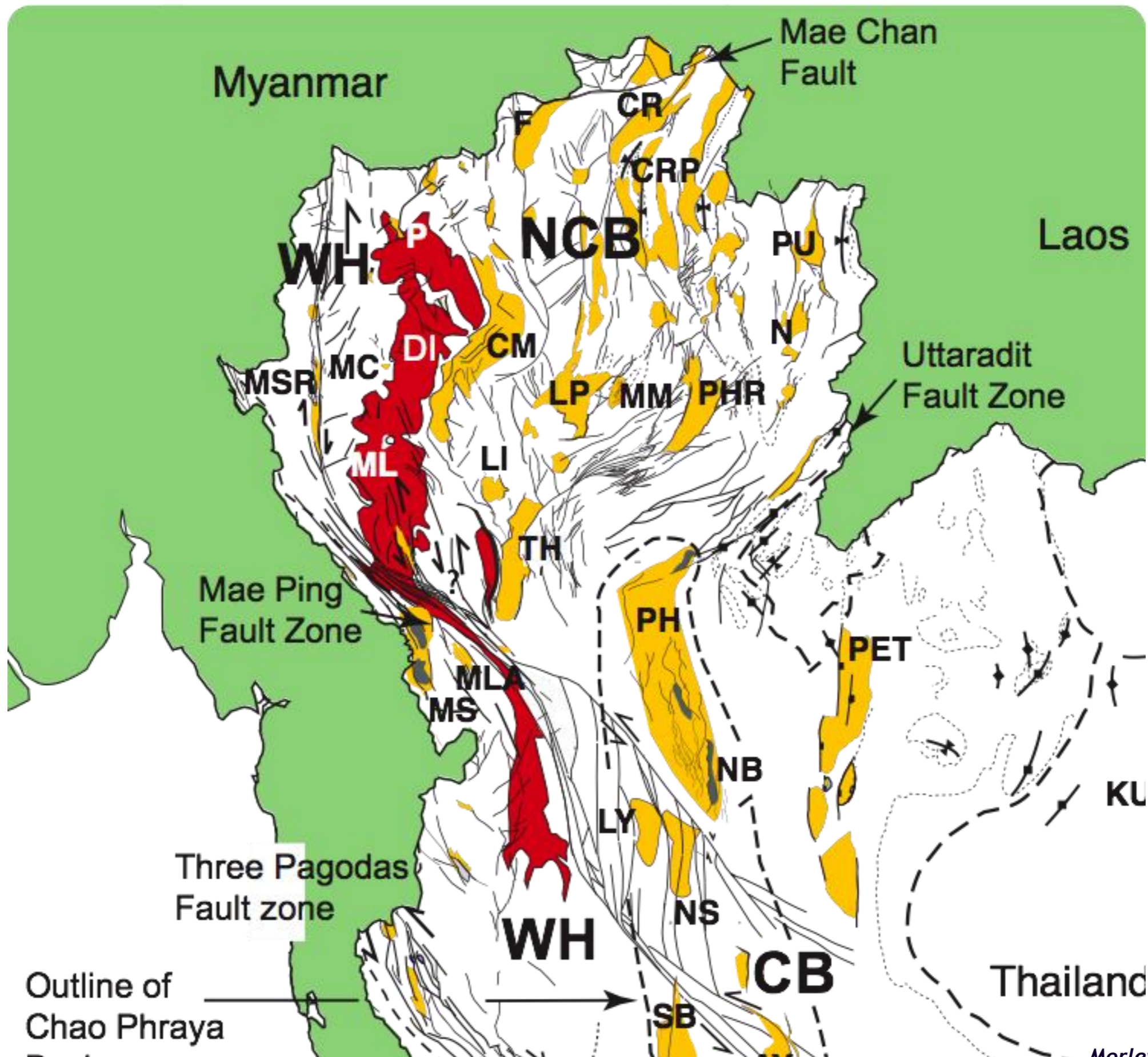
# GEOLOGY OF THE CHIANG MAI BASIN

*A Review*

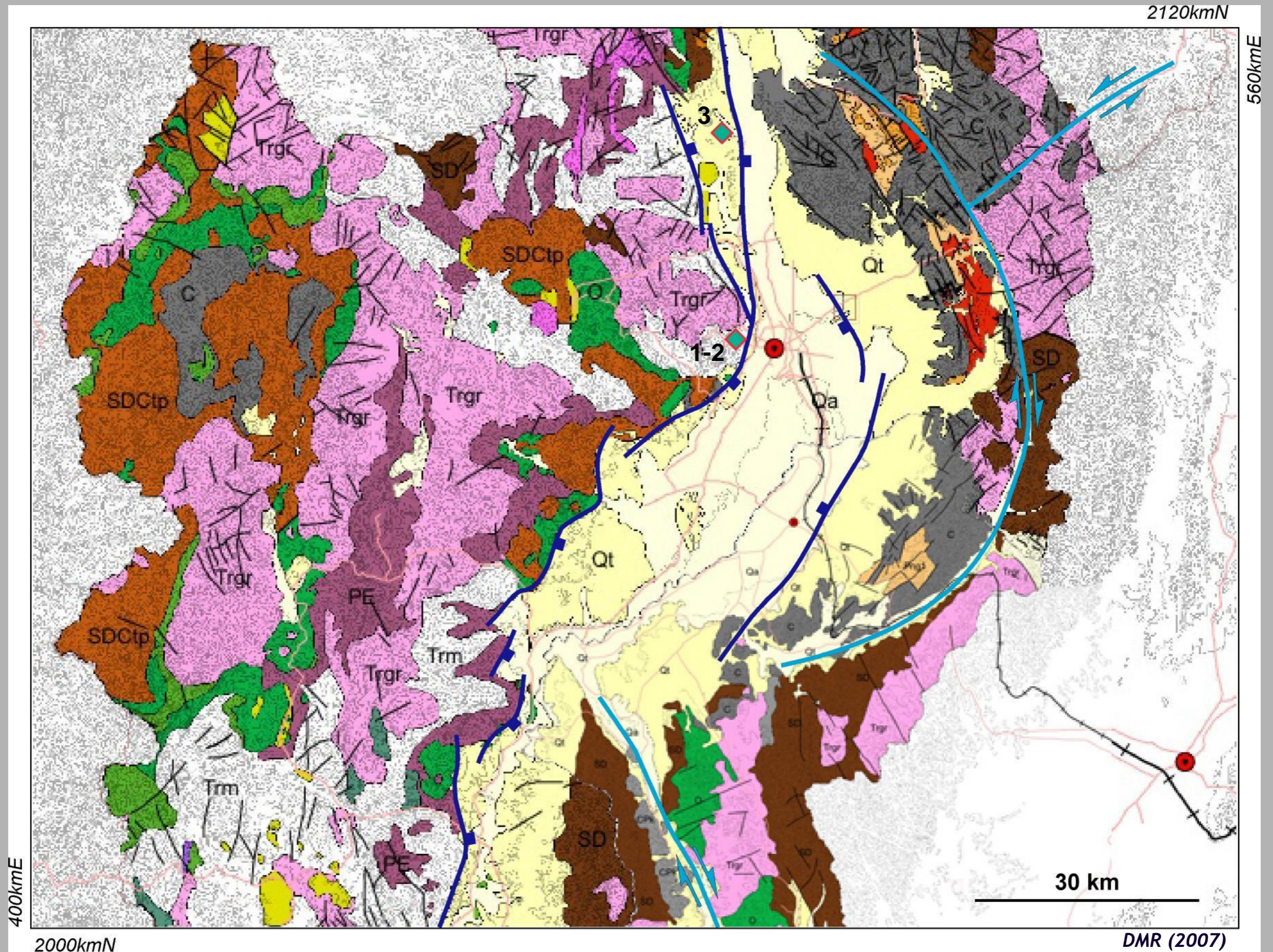
# CENOZOIC BASINS IN THAILAND



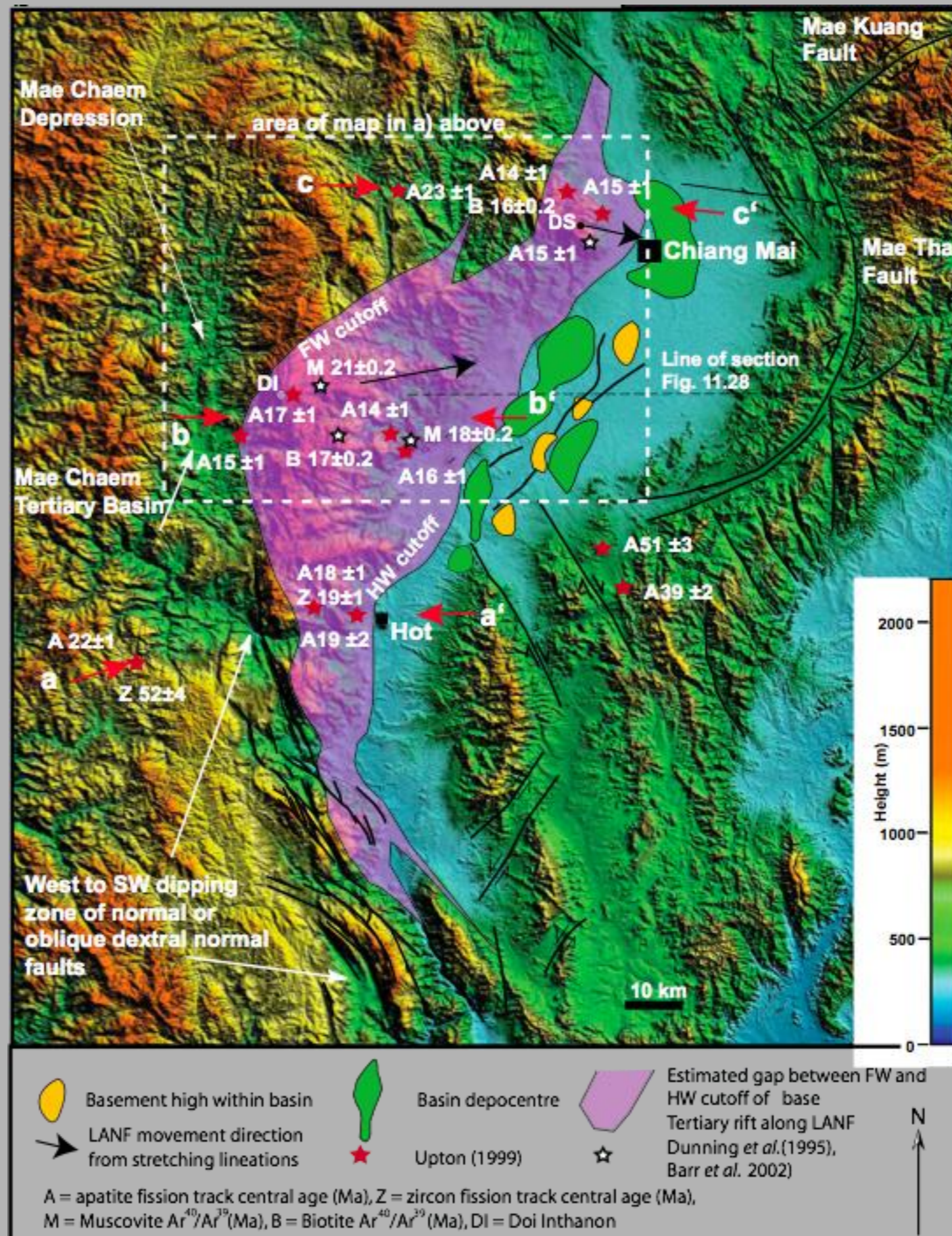
# CENOZOIC BASINS IN NORTHERN THAILAND



# GEOLOGIC MAP

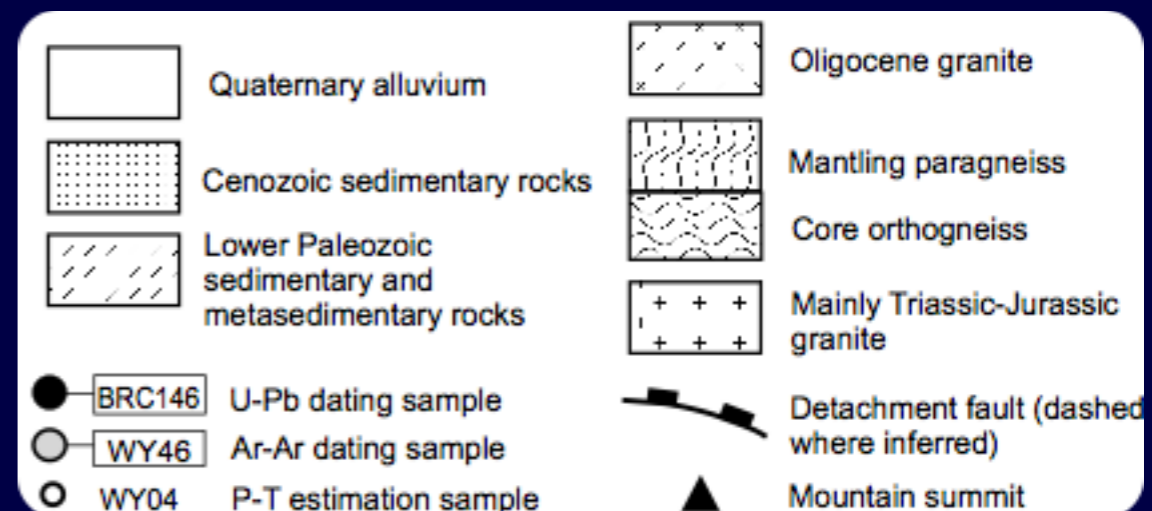
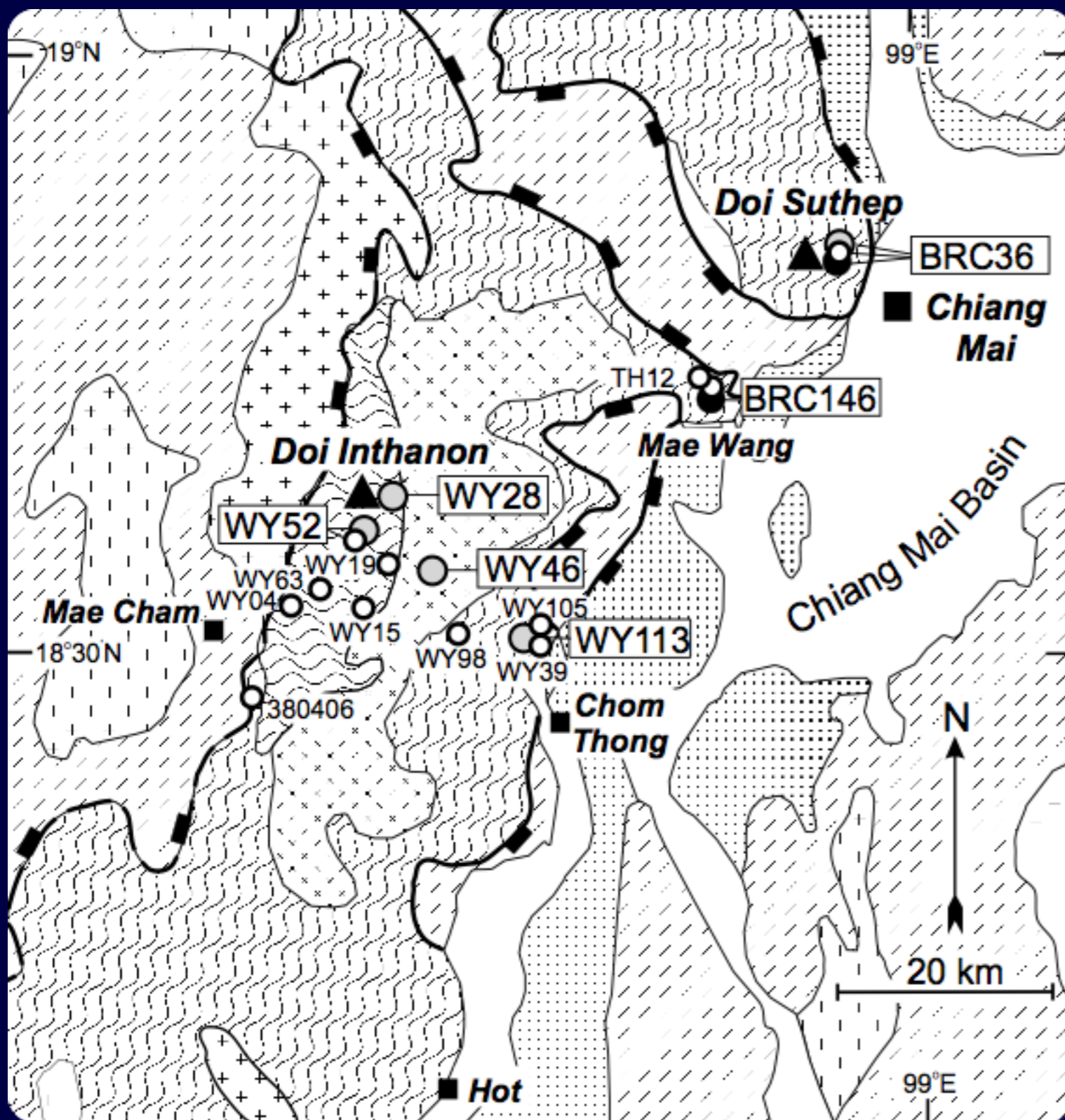


# DEPOCENTRES - INTERPRETED FROM GRAVITY

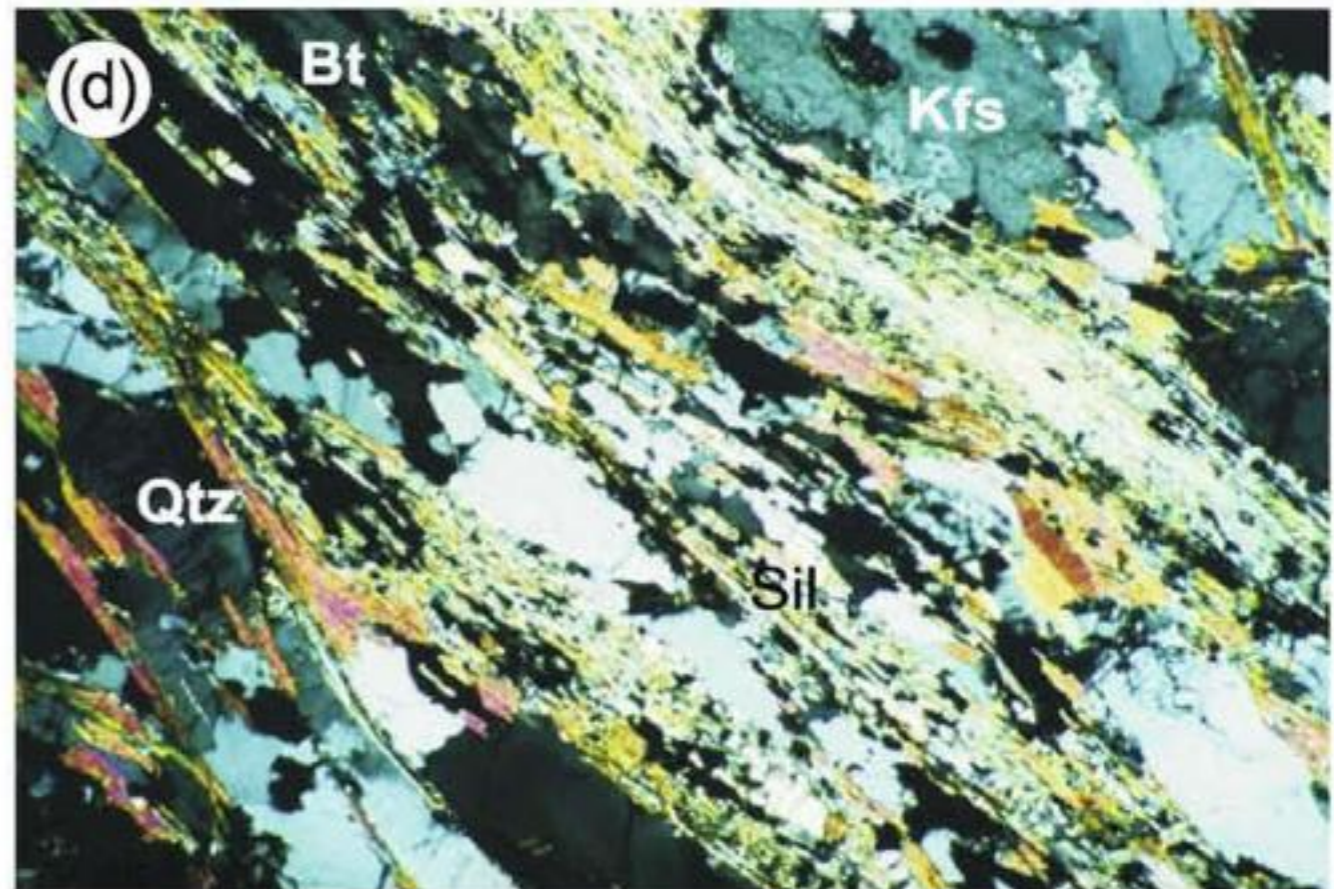
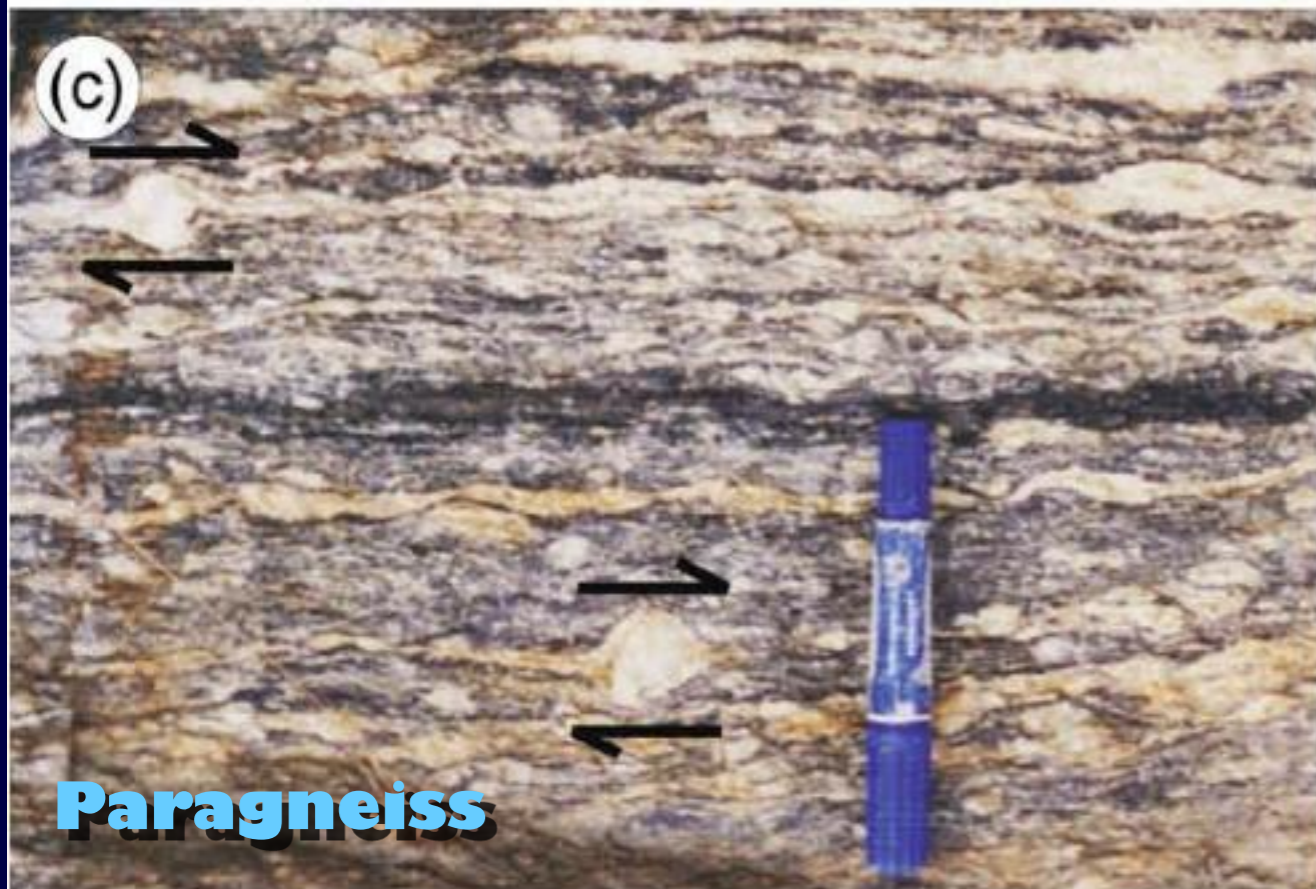
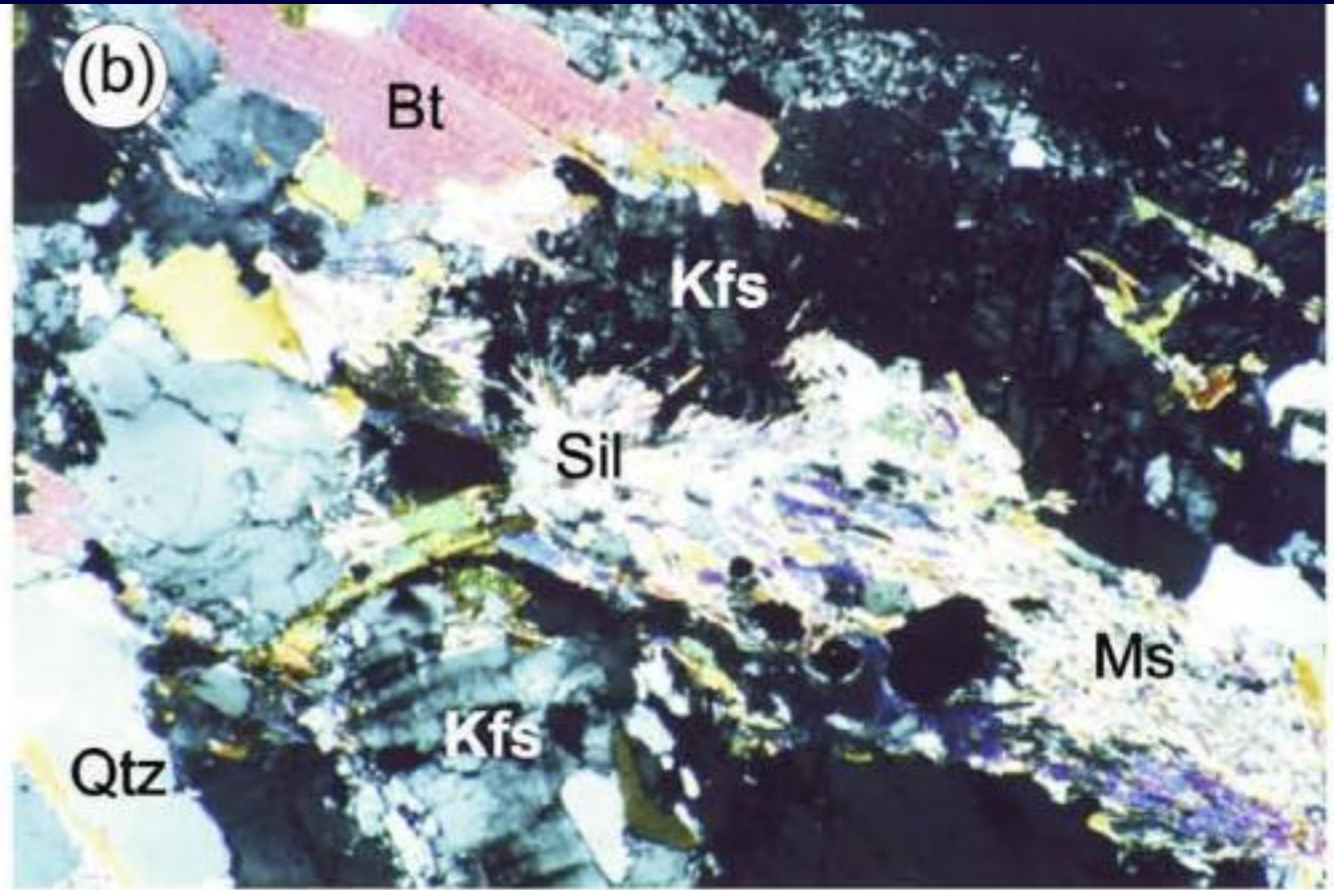




# METAMORPHIC COMPLEX

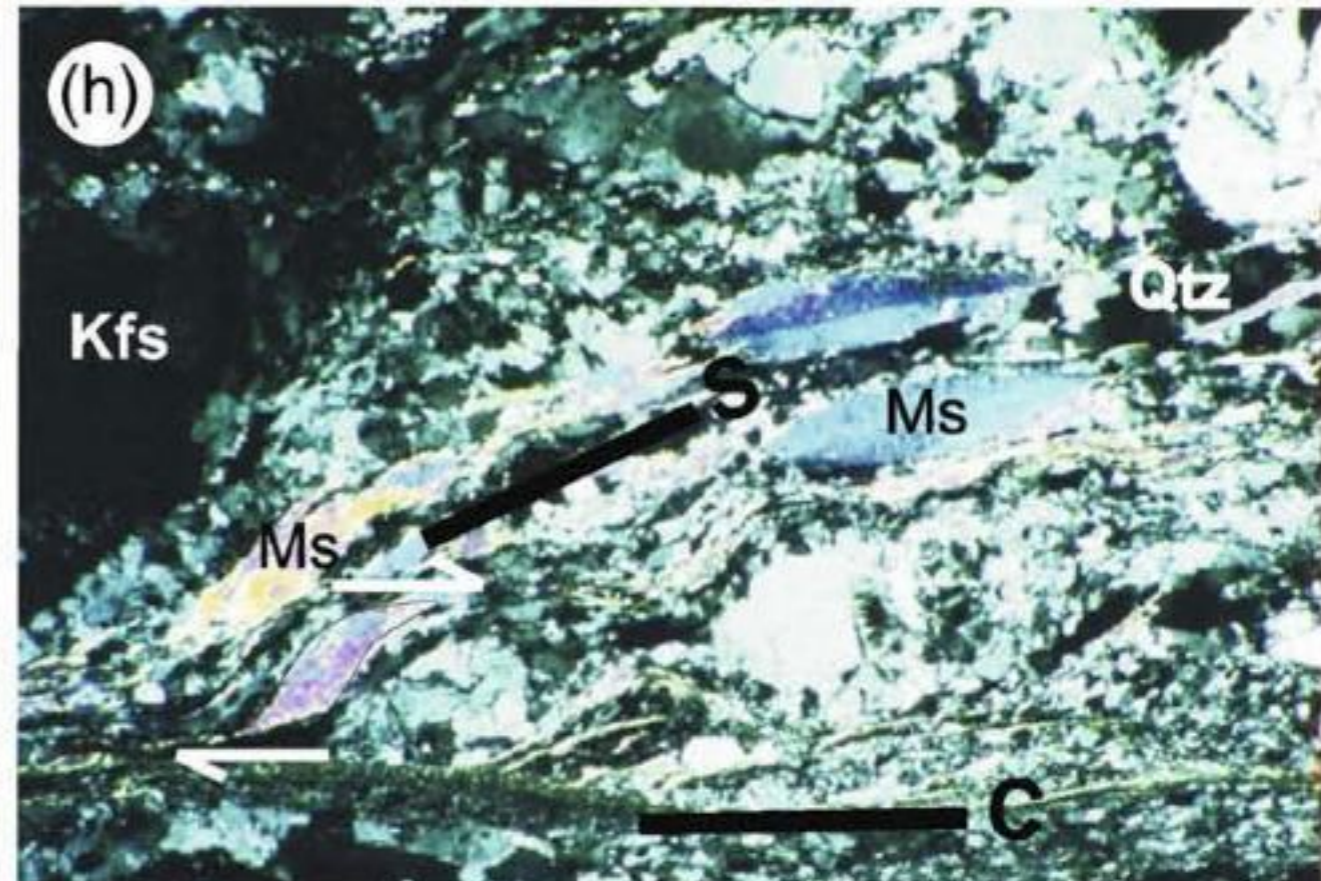
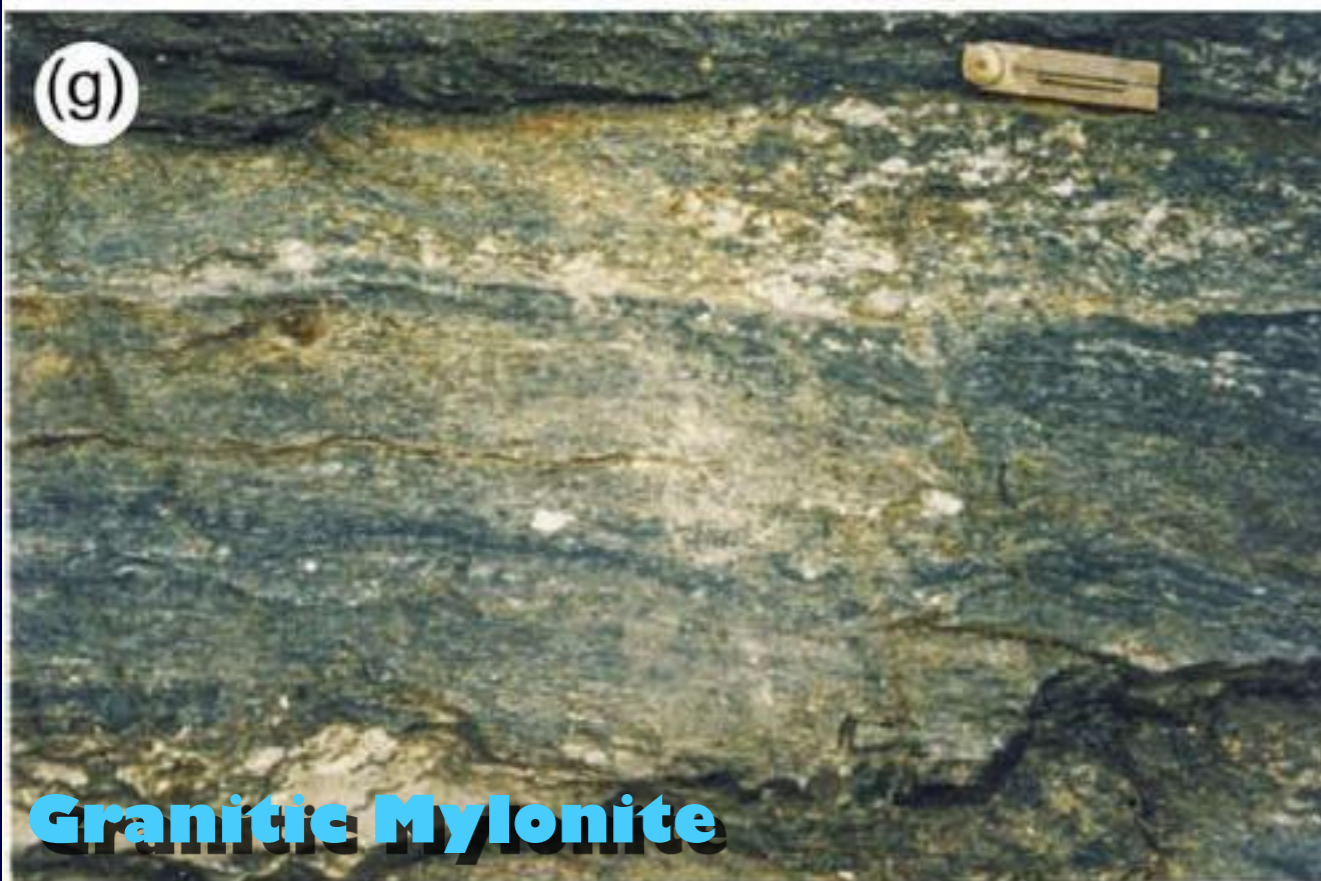
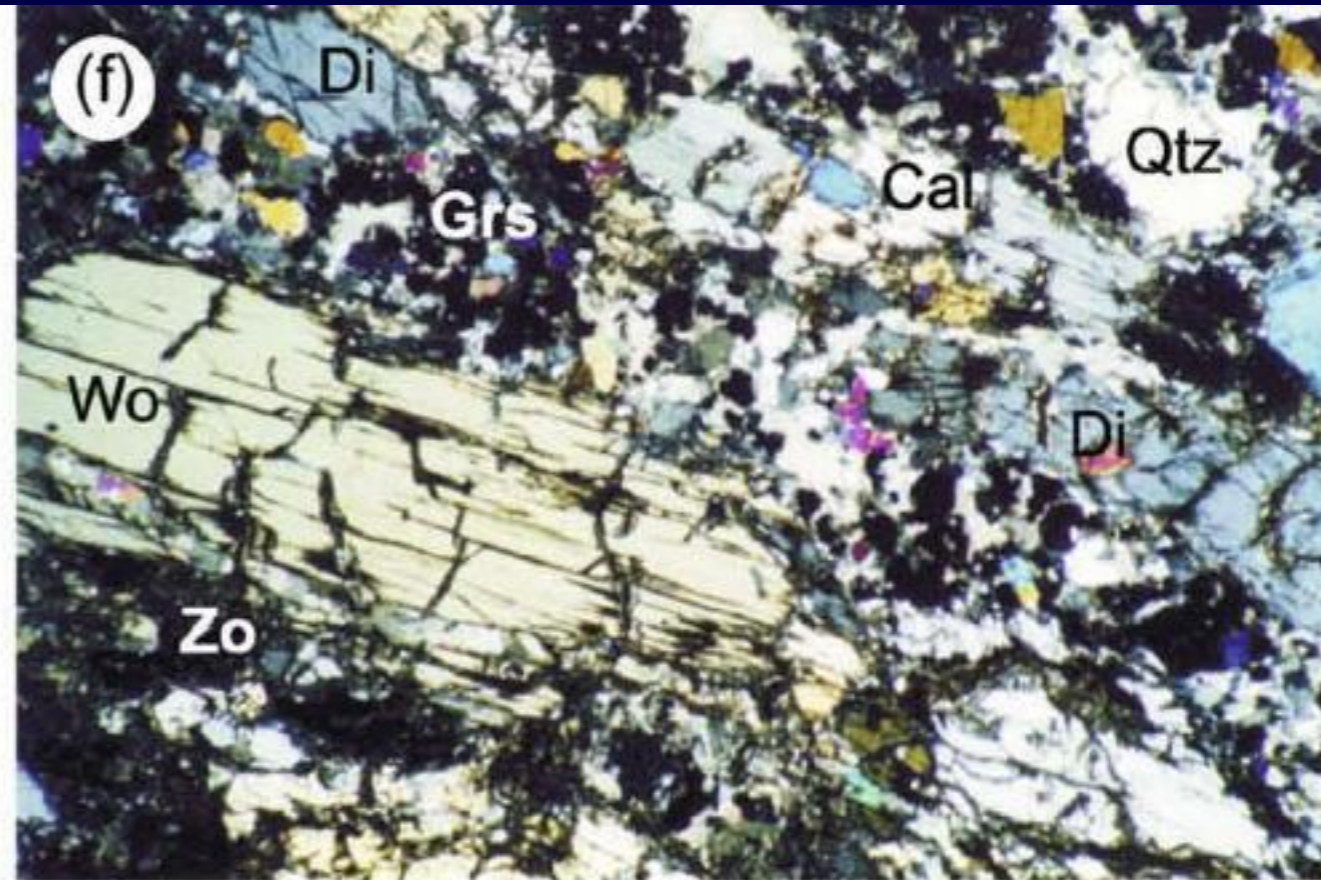


# ROCK TYPES & MINERAL COMPOSITIONS

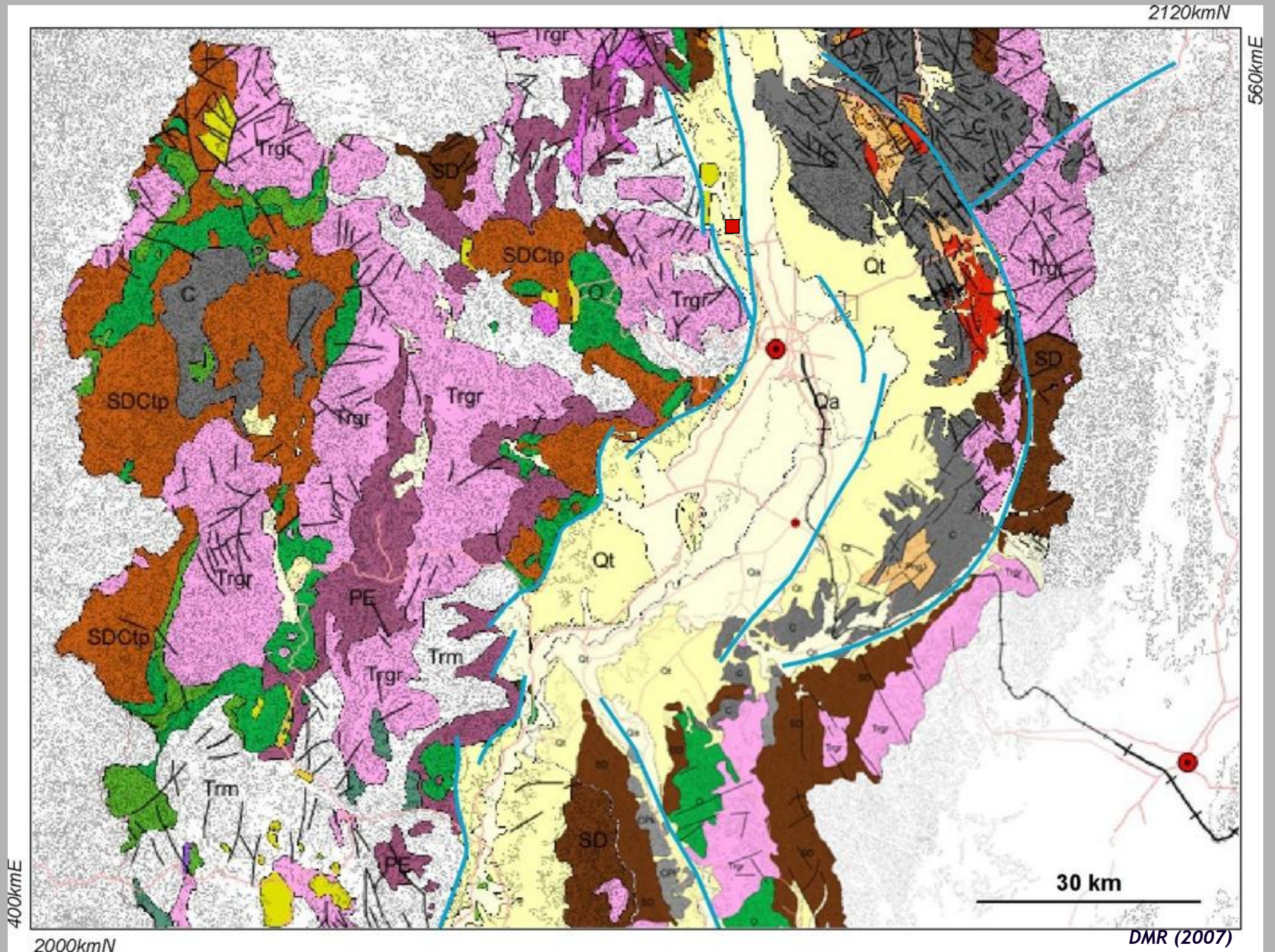




# ROCK TYPES & MINERAL COMPOSITIONS



# GEOLOGIC MAP



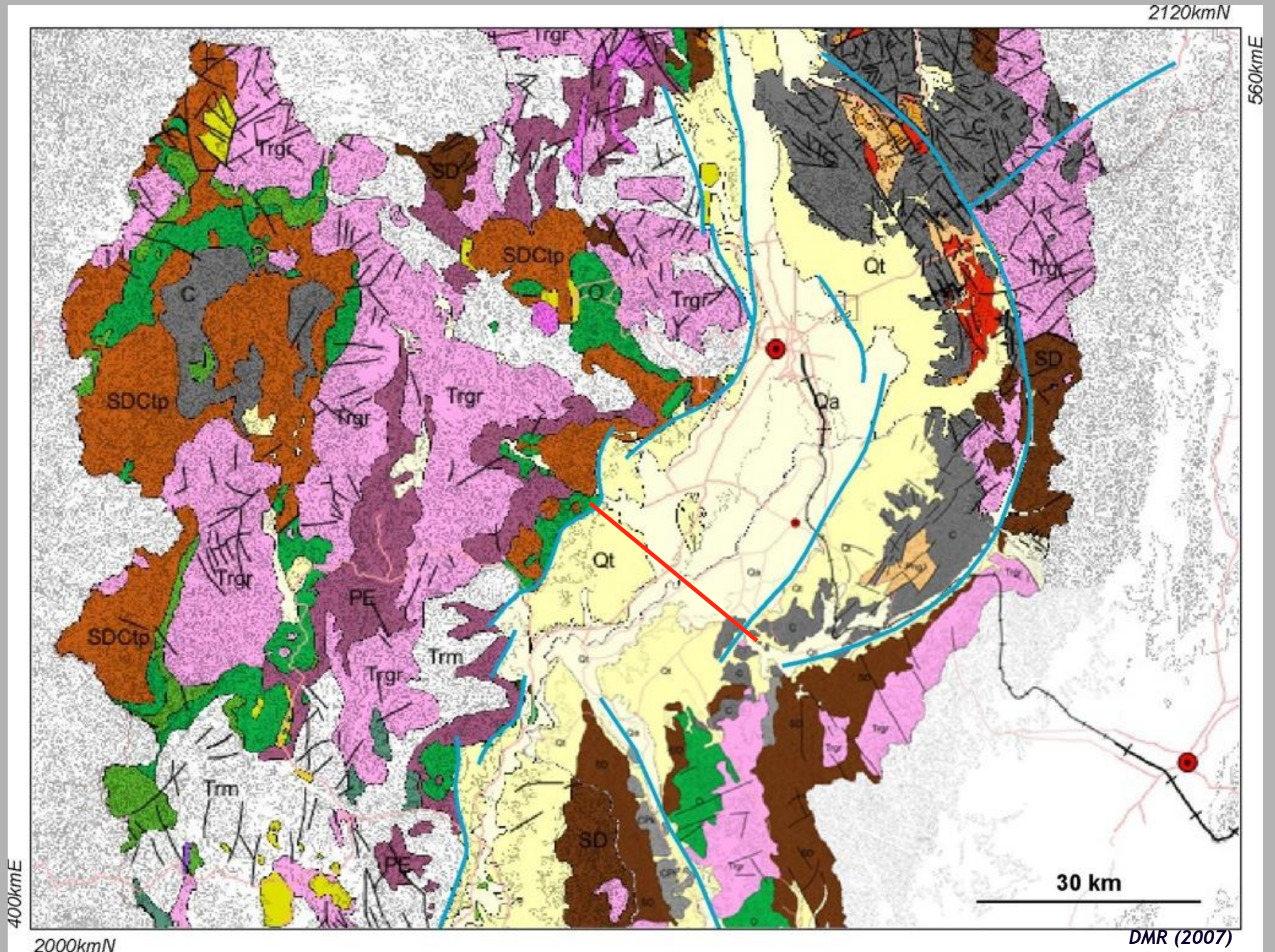
# Tertiary Outcrop - MAE TAENG



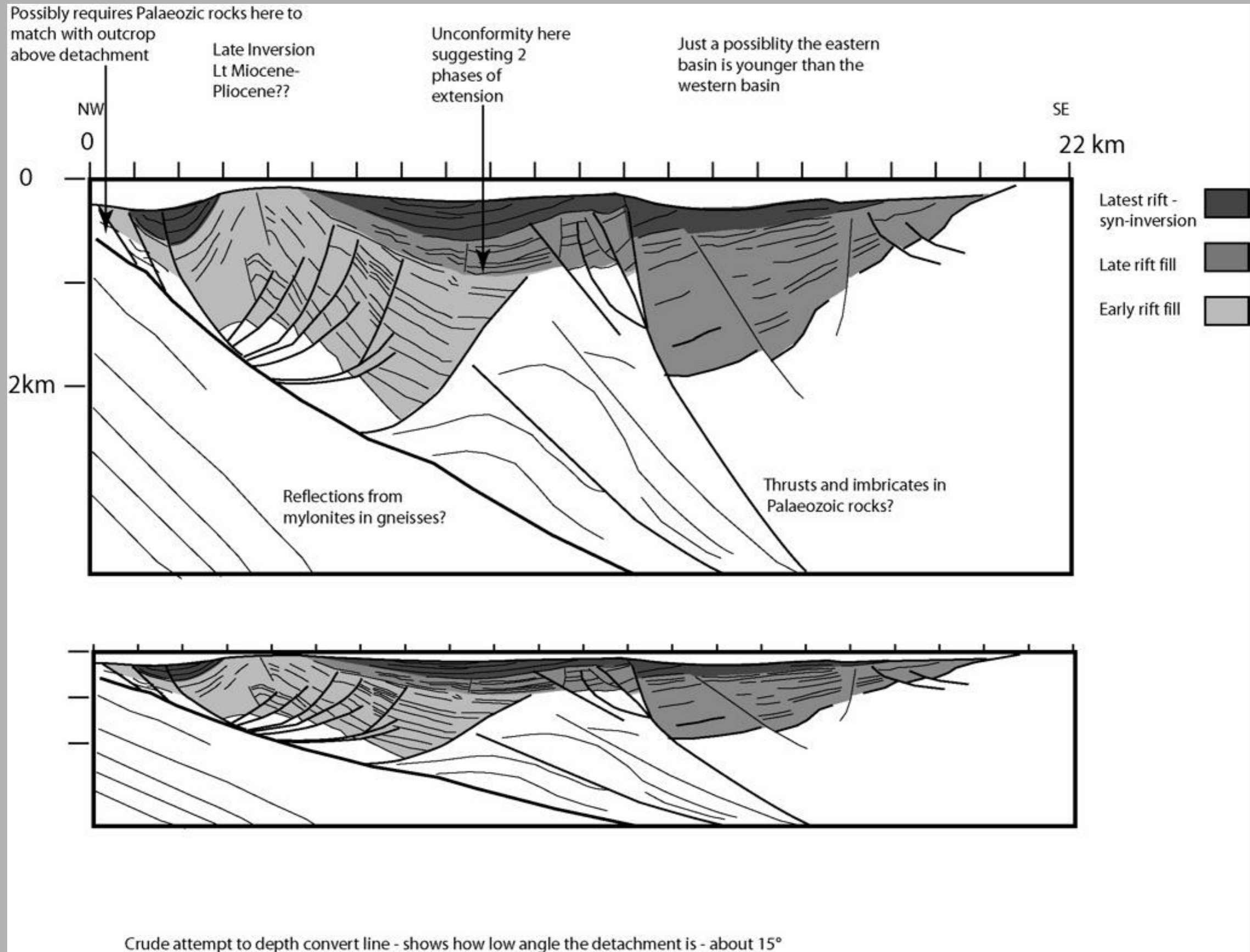
# Tertiary Outcrop - MAE MALAI BYPASS



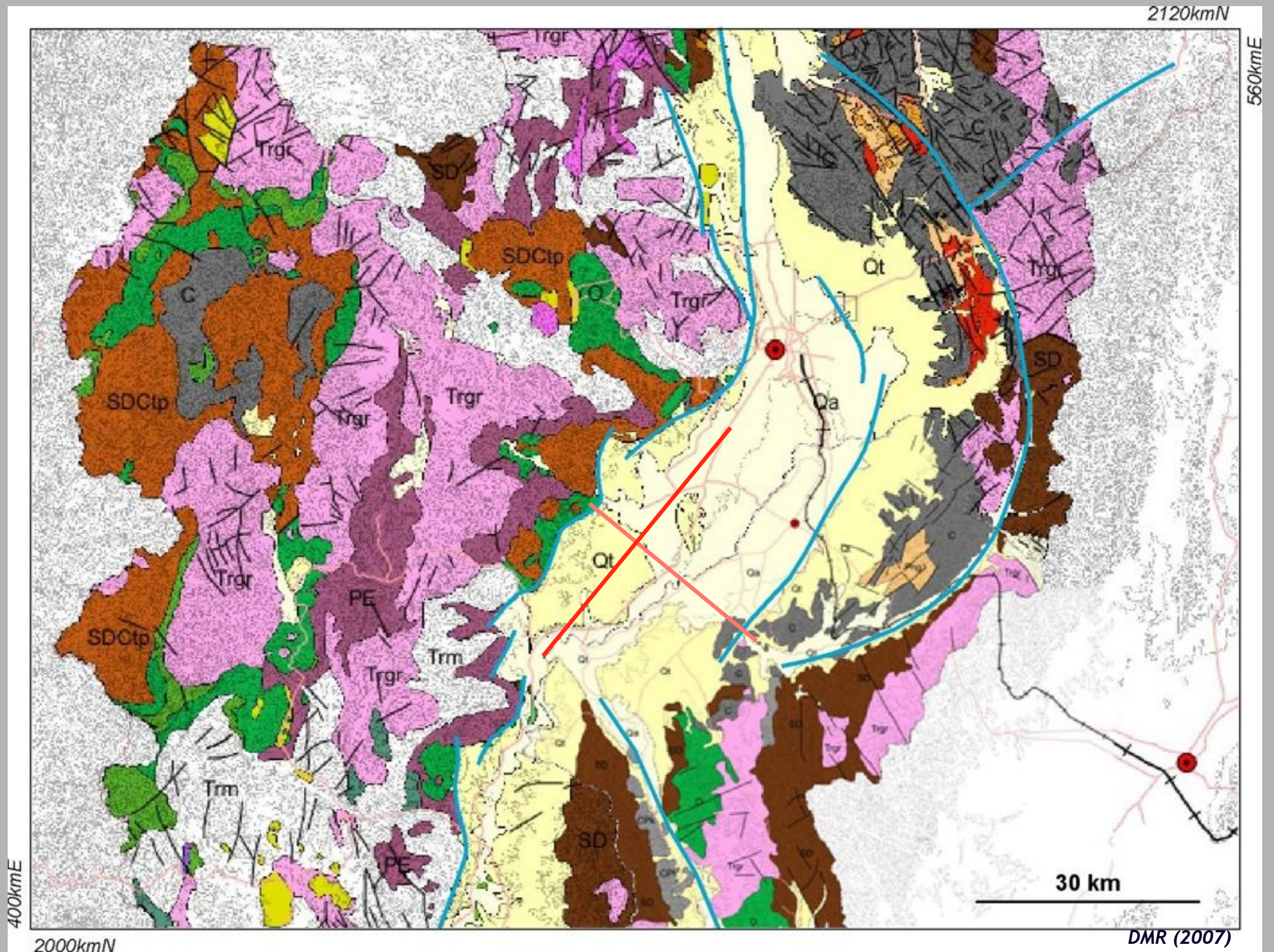
# GEOLOGIC MAP



# SEISMIC INTERPRETATION

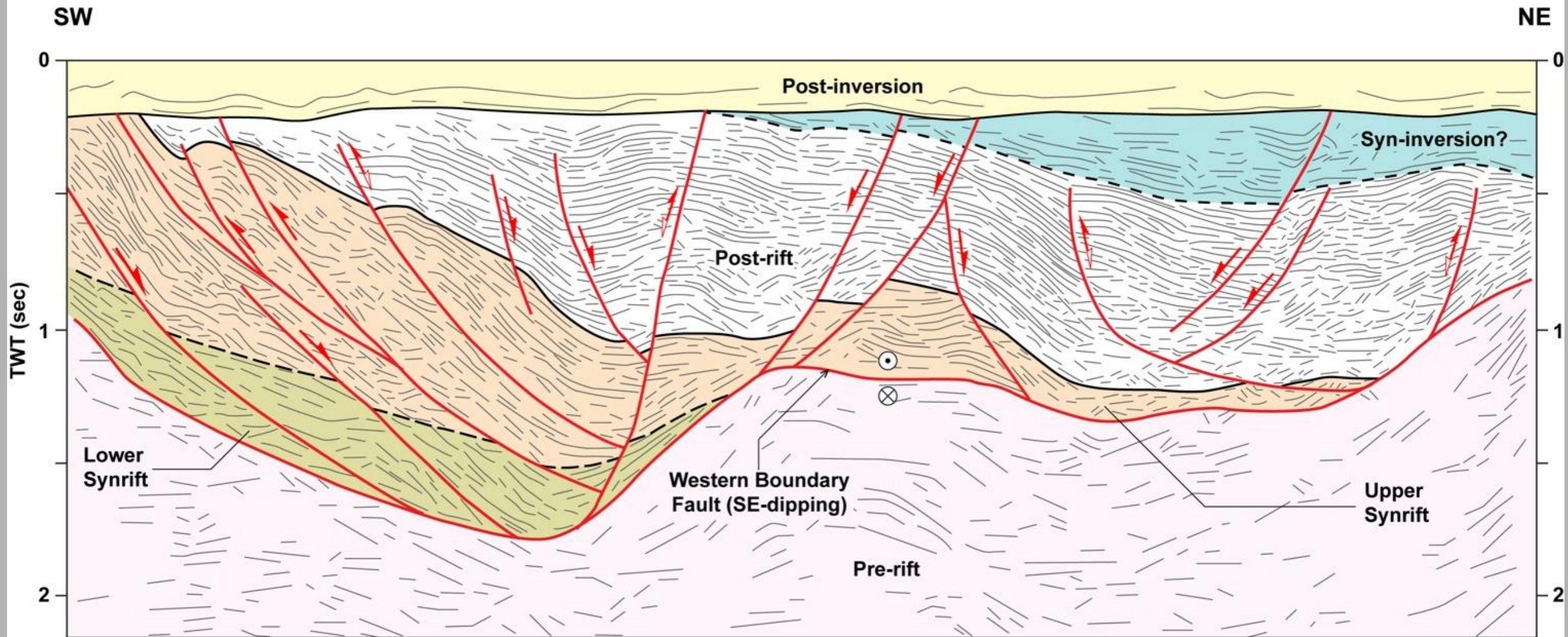


# GEOLOGIC MAP



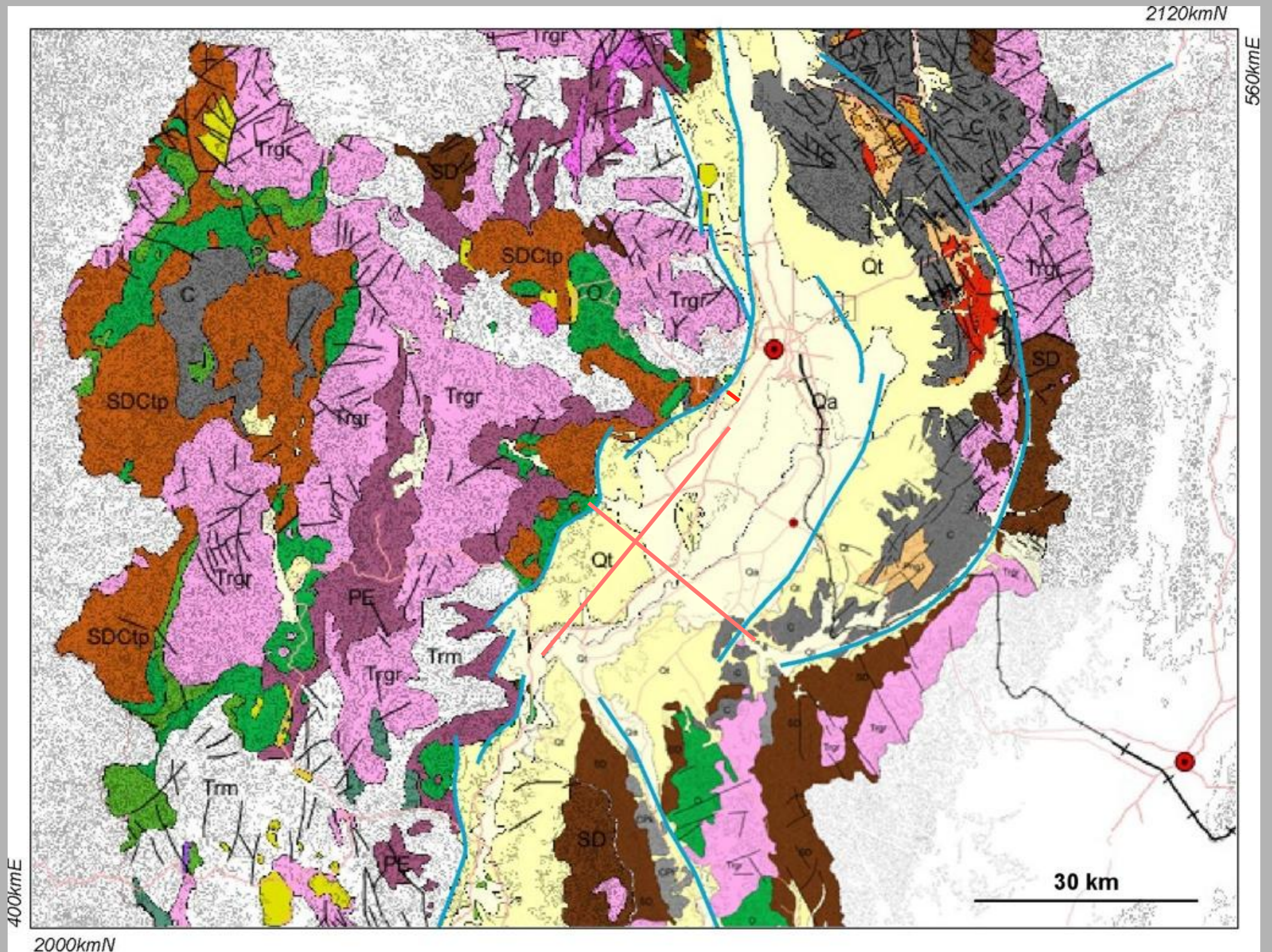
# SEISMIC INTERPRETATION

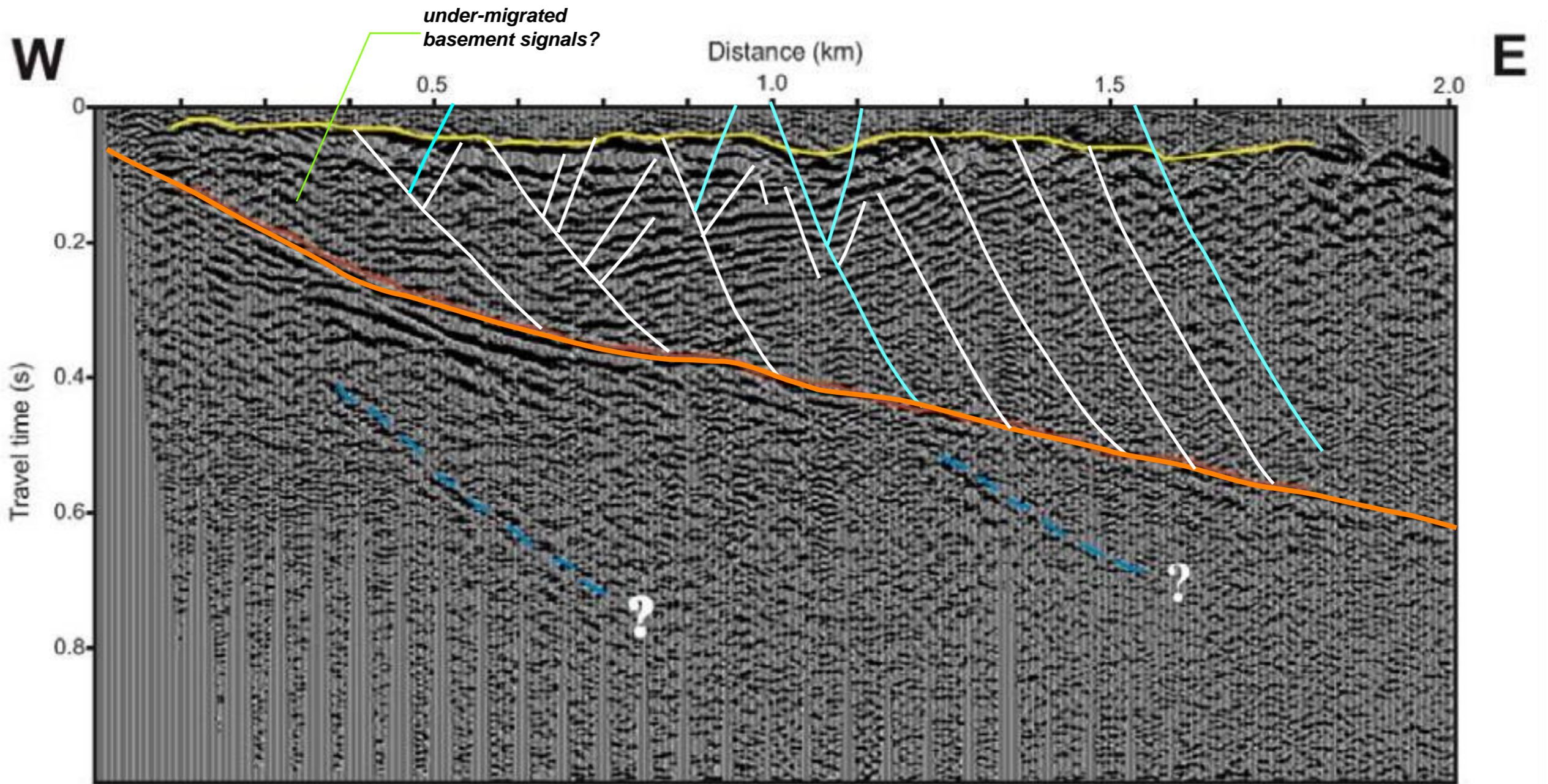
## DED CMSeismic Ip90\_s02





# GEOLOGIC MAP





- Top-Tertiary unconformity
- Detachment at Top Pre-Tertiary
- Potential active fault

*All of the faults appear to be normal and some (blue lines) coincide with offset reflections at Quaternary level.*

# CHIANG MAI BASIN - SCHEMATIC PROFILE

